

## 3D+ Rotor Crank

ROTOR developed the 3D crank to be extremely stiff in order to meet the demands of Thor Hushovd and the sprinters of **Cervelo TestTeam**. But it also needed to be lightweight enough to satisfy the needs of Carlos Sastre and the climbers as well. ROTOR utilizes a special manufacturing process, named the "Trinity Drilling System." An extruded aluminum bar is intricately CNC machined with three drilled holes through the length of the crank. The result is a unique triple hollow crank arm that enables Rotor's engineers to remove the excess aluminum in the core while still maintaining the structural strength of the crank. Available in road compact double (110 bolt-circle diameter) and road standard double (130 bolt-circle diameter) with either a steel or titanium spindle.

ROTOR Bike Components has developed a specific BBright & BB30 crankset base on its successful 3D crank, to be the perfect complement for Cervelo's R5 California frame, yet 100% compatible with any BB30 or Classic BSA threaded frame (using special ROTOR "BSA30" cups) on the market!

- ROTOR 3D+ crank: a light-weight, purebred performance aluminum crank: 475g for 170/110 BCD (w/o BB and chain rings)
- Certified to the EN 14781 standard.
- Aluminum axle (30 mm diameter).
- High precision bearing pre-load adjustability through a compression ring with locknut.
- 100% compatible with: Cervelo BBright specification; BB30 frames (68mm BB width); Classic threaded frames, using ROTOR "BSA30" cups which allow the use of a BB30 crank.; All 130BCD / 110BCD Q-Ring oval chain ring and round chain ring.

- Trinity Drilling System
- 3 holes drilled the length of the crank for light weight.
- DDT Technology of left crank arm means DDT bolts are used to avoid stress risers in the clamping area.



Type		BCD	Spindle	170mm	172.5mm	175mm	Weight	MSRP
Road	3D	130	24mm	20-0260	20-0262	20-0264	543 gms	<b>\$479.98</b>
		110	24mm	20-0266	20-0268	20-0270	"	<b>\$479.98</b>
MTB		2x9/10	24mm	20-0272	20-0274	20-0276	"	<b>\$479.98</b>
Road	3D+	130	30mm	20-0284	20-0286	20-0288	475gms	<b>\$779.98</b>
		110	30mm	20-0290	20-0292	20-0294	"	<b>\$779.98</b>
MTB		2x9/10	30mm	20-0295	20-0296	20-0297	"	<b>\$779.98</b>

## New 3D Aero and Track Cranks

**MSRP \$479.98**



Striking Aero spider design with reinforced structure which increases stiffness to endure the demands of track racing, whilst improving aerodynamics.

- Trinity Drilling system
- DDT technology on crank bolts for low stress.

	170mm	172.5mm	175mm
130BCD Aero	20-0170	20-0175	20-0180
144 BCD Track	20-0185	20-0190	20-0195

## NEW Agilis Crank

**MSRP \$383.98**

Fully revamped design with new axle and clamp shared with 3D crank system  
 17% stiffer than previous model  
 Conventional installation  
 Lightweight hollowminium 2 technology



	170mm	172.5mm	175mm
3X9/10	20-0230	20-0235	20-0240
2x9/10	20-0245	20-0250	20-0255

## New Rotor Chains



Rotor new line of chains are lightweight and strong. All have hollow outer plates and chromed pins for increased durability.

Chain	Speeds	Coating	Weight	Part#	MSRP
SL 101-ti	10 Spd	Titanium Nitrate, hollow pin	253g	20-1350	<b>\$99.98</b>
SL 100CR	10 spd	Chrome Silver, hollow pin	262g	20-1355	<b>\$73.98</b>
SH 10CR	10 spd	Chrome Silver	274g	20-1360	<b>\$49.98</b>
SL901Ti	9 spd	Titanium Nitrate, hollow pin	261g	20-1300	<b>\$91.98</b>
SL 900CR	9spd	Chrome Silver, hollow pin	270g	20-1305	<b>\$57.98</b>
SH9CR	9spd	Chrome Silver	284g	20-1310	<b>\$37.98</b>

## Q Rings

### Stealth performance weaponry

Meet cycling's ultimate secret weapon. Q-Rings offer some of the performance advantages of the Rotor System to those with standard cranksets at no weight penalty. The ease of adaptation and performance benefits they offer make them a no-brainer upgrade for the discerning cyclist: Your "sceptical and infinitely wiser" buddies won't believe that your awesome sprints and powerful climbs come from your Q-Rings.

Q-Rings increase your power by emulating a Rotor System crank set in the power stroke and by minimizing the intensity of the "dead spot" zones. By extending the time you spend in the power stroke (where 90% of all power is produced) and smoothly accelerating the legs through the critically weak "dead spots", simultaneously magnifying the feeble pedal input in these zones, Q's give that extra advantage you need to get ahead.

### Chain Ring Diameter Grows as Leg Strength increases



#### BCD 130 BCD

Q Ring	Part#	MSRP	Q Ring	Part#	MSRP
39t inner	20-0805	\$99.98	50t outer	20-0775	\$199.98
40t inner	20-0810	\$129.98	52t outer	20-0770	\$199.98
42t inner	20-0795	\$129.98	53t outer	20-0768	\$199.98
44t inner	20-0790	\$129.98	50t aero tt	20-0774	\$229.98
46t inner	20-0786	\$129.98	52t aero tt	20-0773	\$229.98
46t outer	20-0788	\$199.98	53t aero tt	20-0760	\$229.98
48t outer	20-0780	\$95.98	54t aero tt	20-0750	\$229.98
			55t aero tt	20-0748	\$249.98

**Q Rings**
**I have a perfect Spin so why Q rings?**

Not many people realize the reason to have a perfect spin is to compensate for the weak spot in your leg's rotation. Having a perfect spin is still not the total answer to solving this problem as certain muscles in your legs will always out power others and the vertical cranks will never have useful leverage on the chain.

Rotors Q rings are designed with Smooth Diameter variations which magnify the benefits of a smooth spin.

**BCD 110 BCD**

Q Ring	Part#	MSRP	Q Ring	Part#	MSRP
34t inner	20-0700	\$99.98	50t outer OCP3	20-0675	\$199.98
36t inner	20-0705	\$99.98	52t outer	20-0669	\$199.98
38t inner	20-0695	\$99.98	53t outer	20-0666	\$199.98
46t outer	20-0686	\$199.98	50t aero tt	20-0679	\$229.98
50t outer	20-0680	\$199.98	52t aero tt	20-0665	\$229.98

**BCD 113/135 BCD Campy**

Q Ring	Part#	MSRP	Q Ring	Part#	MSRP
36t inner113	20-0735	\$99.98	40t inner 135	20-0840	\$99.98
50t outer 113	20-0730	\$199.98	53t inner 135	20-0850	\$199.98

**Zipp Vuma Quad**

Q Ring	Part#	MSRP	Q Ring	Part#	MSRP
36t inner 110x4	20-0870	\$99.98	52t outer 110x4	20-0880	\$279.98

**104-64BCD 3x9/10**

Q Ring	Part#	MSRP	Q Ring	Part#	MSRP
23t inner 64	20-0610	\$79.98	23t inner XTR 960/970	20-0630	\$79.98
33T middle 104	20-0605	\$99.98			
44T outer 104	20-0600	159.98	34t SS 104	20-0608	\$143.98

**2 x 9/10**

Q Ring	Part#	MSRP	Q Ring	Part#	MSRP
27t inner 74x5	20-0645	\$119.98	40t outer 110x5	20-0640	\$179.98

**Sram 2x10**

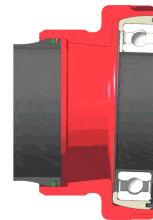
Q Ring	Part#	MSRP	Q Ring	Part#	MSRP
27t inner XX	20-0647	\$134.98	42t outer XX	20-0643	\$199.98
28t inner XX	20-0648	\$134.98	27t inner Specialized	20-0655	\$119.98
40t outer XX	20-0642	\$199.98	40t outer Specialized	20-0650	\$179.98

## S.A.B.B. – Self Aligning Bottom Bracket

**MSRP \$ 149.98**

### What is the SABB?

The **Self Aligning Bottom Bracket** from ROTOR is the standard BB of the 3D+ crankset and is compatible with most cranksets from other major manufacturers. The SABB uses external bearings, but contains a fundamental difference to every other outboard bearing bottom bracket system: the bearings are held within ball-in-socket housings, allowing them to swivel into absolutely parallel alignment with each other, irrespective of any outside influences. This automatic self-alignment of the bearing races occurs independent of any possible frame imperfections or stresses: unparallel faces, non perfect concentricity of the threading in both sides, deformation due to excessive loading, etc.



	BSA 68mm	ITA 70mm	MTB 68/73
Steel Bearing	20-0300	20-0305	20-0310
With Ceramic Bearings	20-0320	<b>MSRP \$299.98</b>	

## New BB1 Bottom Bracket

**MSRP \$ 65.98**



### Rotor quality BB

7005 Machined Aluminum  
Hard anodized black body  
Available Red or Black.  
Sealed cartridge bearings

	BSA 68mm	ITA 70mm	MTB 68/73
Steel Bearing Black	20-0335	20-0340	20-0330
Steel Bearing Red	20-0336	20-0341	20-0331

## New BSA 30 Bottom Bracket

**MSRP \$ 89.98**

30 MM external bearings that allow you to install your 3D+ or other 30mm cranks in a classic BSA Threaded Frame.

68/73 Steel  
Black

20-0350



## New BB 30/24 Bottom Bracket

**MSRP \$ 89.98**



BB 30 to 24 converter which allows the installation of conventional BB24 cranks in a new BB 30 Frame

68/73 Steel  
Black

20-0355

## New Press Fit and Track Bottom Brackets

Press Fit Bearings designed to work with Shimano press fit systems

Steel CNC Machined cups. No plastic caps needed. Only 113 gms



	Part #	MSRP
Press fit	20-0360	\$65.98
Track	20-0361	\$129.98



## New S1 Seat Posts

**MSRP 129.98**

Rotor's new lightweight seat post. Using dual pitch threaded technology this post is light and strong. 7075 CNC alloy construction. 3 sizes all 350mm long



27.2mm	30.9mm	31.8mm
20-1210	20-1205	20-1200

## SD1 Ti Saddle

**MSRP \$199.98**



Rotor's new saddle is only 136 grams. The base is a polyamide 12 structure mixed with 35% carbon fibre for stiffness. Titanium rails. A unique "total mould" system which bonds the base foam and the cover all together for more comfort and durability but still keeping the saddle light.

20-0300

## Rotor Chain Catcher

**MSRP \$34.98**

#20-2000

- 7075 CNC Alloy
- Braze on front derailleur compatible only.
- Eliminates chain falling down frame
- Ultra light, only 6 grams
- Red Only
- Used by Cervelo Test Team



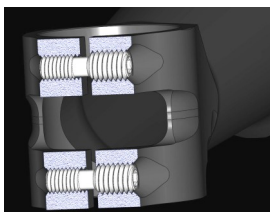
## Rotor S1 Stem

**MSRP \$ 199.98**

**What do you get when you cross the strongest with the lightest stem?**

**The S1:** You've never seen a stem that offers this much stiffness, endurance and strength with so little weight. Add high precision CNC and turning of a forged block of T6 treated aluminum to the mix, and you have the ultimate bike component. Rotor strikes again...

DTT—**Dual thread technology.** Special dual threaded bolt design makes for ultra light-weight headless bolts that tighten the stem and faceplate.



+/-7deg.	90mm (99gms)	100mm (104gms)	110mm (108gms)	120mm (113gms)	130mm (118gms)
Black w/Red Faceplate	20-0000	20-0005	20-0010	20-0015	20-0020
All Black	20-0030	20-0035	20-0040	20-0045	20-0050

## SX Stem

**MSRP \$ 219.98**



### Strong and Light!

7005 Machined Aluminum  
 Hard anodized black body  
 Available Red or Black face plate  
 DTT Evo technology with stainless steel bolts  
 Available in 70-120mm extensions  
 OS 31.8mm bar size only  
 2.5mm+- rise.

	Black	Red
70mm	20-0055	20-0056
80mm	20-0057	20-0058
90mm	20-0060	20-0065
100mm	20-0070	20-0075
110mm	20-0080	20-0085
120mm	20-0090	20-0095

## New SX3 Stem

**MSRP \$ 239.98**

4 Titanium Bolts  
 7005 Machined Aluminum  
 Hard anodized black body  
 Available in Red or Black face plate  
 DTT Evo technology with stainless steel bolts  
 Carbon conscious design with wider face plate.  
 +-6%

	Black	Red
70mm	20-0100	20-0105
80mm	20-0110	20-0115
90mm	20-0120	20-0125
100mm	20-0130	20-0135
110mm	20-0140	20-0145
120mm	20-0150	20-0155



## New SL2 MTB Stem and S3 Carbon Bar

**MSRP from \$ 199.98**



The perfect combination of lightweight and strong, Bar and Stem Combo

SL2 90mm	20-0160	\$215.98
SL2 105 mm	20-0162	\$215.98
SL2 120mm	20-0164	215.98
S3 580mm	20-1250	\$199.98

